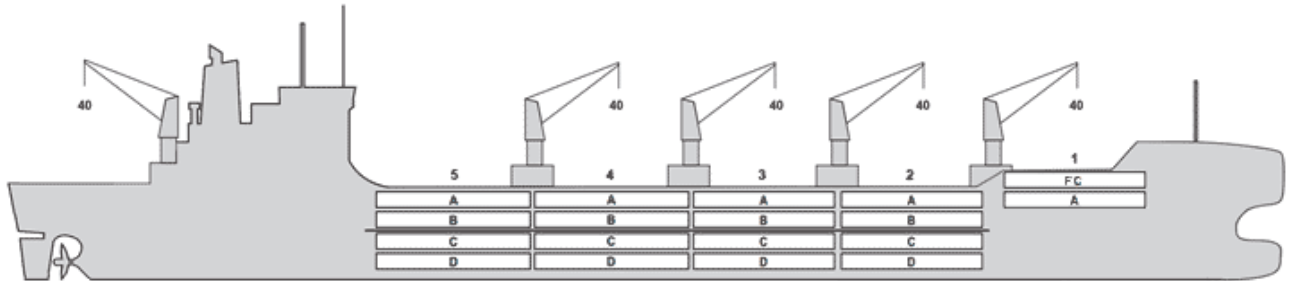




COOL EAGLE



BASICS

Flag	Panama
LLoyds no.	9889801
Class	NK
Int GRT/NRT	22,452 / 9,657
Pan GRT/NRT	18,709
Suez GRT/NRT	23,272 / 19,361
Built	2021
Length over all m	189.90
Breadth moulded m	30.70
Depth W.D. m	15.5
Sdwt mton	23,169
Draught sdwt m	10.33
Bale cbft	904,950
Area m ²	9,672
Bow thruster	Available
Hatch covers	5
Holds/Compartments	5 / 18
Fcslc deck	YES
Trunk deck	NO
USDA	Sensors fitted
PPECB	Sensors fitted
Reefer plugs	342
Grating load	7 MT Axleload Pneumatic tires
Grating	Wooden
Temp min/max °C	-25 / 15
Air circs/hour	90
Air renew/hour	2

BALE cbft

DECK & HATCH	1	2	3	4	5
FC	34,542				
A	17,301	56,801	72,410	72,445	65,494
B		35,891	61,515	65,644	58,732
C		28,778	56,140	65,442	58,157
D		20,596	46,167	38,398	50,497
Total	51,843	142,066	236,232	241,929	232,880

Grand total 904,950

DECK AREA m2

DECK & HATCH	1	2	3	4	5
FC	351				
A	179	554	727	727	645
B		396	683	729	647
C		316	622	725	639
D		229	515	427	561
Total	530	1,495	2,547	2,608	2,492

Grand total 9,672

Free deckheight minimum 2.50 m

HATCHES (Weather deck) m

Hatch	Length	Width	Insulated units
1	6.65	8.4	1FA
2	12.6	10.3	AB/CD
3	12.6	10.3	AB/CD
4	12.6	10.3	AB/CD
5	12.6	10.3	AB/CD

Insulated units are separate cooling sections.

COOL EAGLE

CARGO GEAR

No of	Type	SWL mton	UP mton
5	Electro hydraulic	40	-

Max single lift cap: 5 x 40 MT

Max twin lift cap : 40MT

MAXIMUM CONTAINER CAPACITY

	20 ft (8'6") Empty/ loaded	40 ft (9'6") Empty/ loaded	Stackweight 20 ft/ 40 ft
Weather Deck	320/ 320	254/ 254	60,0 / 124,0
Hatch covers	172 / 172	88 / 88	50,0 / 124,0
Holds	115 / 115	58 / 58	80,0 / 124,0

Reefer plugs: 342

Above figures based on 14 M for loaded 20 ft and 25 MT for loaded 40 ft Subject Master approval, Stability & Visibility

Please contact Baltic Shipping for information about speed and consumption

All details believed to be correct but not guaranteed